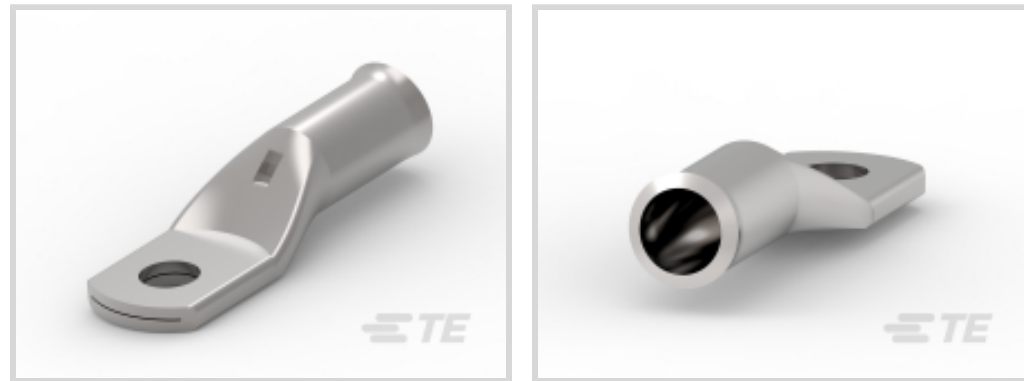




Energy & Power > Power Systems Connectors > Compression Connectors



Compression Connector Product Availability: **EMEA**

Compression Connector Technology: **Crimp**

Compression Connector Voltage Class: **≤ 1 kV**

Compression Connector Conductor Material: **Copper**

Conductor Cross-Section: **95 mm²**

Features

Product Type Features

Type	Terminal Lug
Compression Connector Technology	Crimp
Compression Connector Material	Copper

Configuration Features

Number of Holes	1
-----------------	---

Electrical Characteristics

Compression Connector Voltage Class	≤ 1 kV
-------------------------------------	-------------

Body Features

Barrel Type	Long
Compact Format	No
Compression Connector Conductor Material	Copper
Copper Palm	Yes

Contact Features

Crimp Type	Hexagonal or Indent Crimping
------------	------------------------------

Dimensions

Conductor Cross-Section	95 mm ²
Palm Hole Diameter	12.8



Operation/Application

Indoor Use	Yes
Outdoor Use	Yes

Industry Standards

Standards	Designed to Meet NFC 20-130 Requirements
-----------	------------------------------------------

Product Availability

Compression Connector Product Availability	EMEA
--------------------------------------------	------

Product Compliance

[For compliance documentation, visit the product page on TE.com>](#)

EU RoHS Directive 2011/65/EU	Compliant
EU ELV Directive 2000/53/EC	Compliant
China RoHS 2 Directive MIIT Order No 32, 2016	No Restricted Materials Above Threshold
EU REACH Regulation (EC) No. 1907/2006	Current ECHA Candidate List: JUNE 2022 (224) Candidate List Declared Against: JAN 2022 (223) Does not contain REACH SVHC
Halogen Content	Low Halogen - Br, Cl, F, I < 900 ppm per homogenous material. Also BFR/CFR/PVC Free
Solder Process Capability	Not applicable for solder process capability

Product Compliance Disclaimer

This information is provided based on reasonable inquiry of our suppliers and represents our current actual knowledge based on the information they provided. This information is subject to change. The part numbers that TE has identified as EU RoHS compliant have a maximum concentration of 0.1% by weight in homogenous materials for lead, hexavalent chromium, mercury, PBB, PBDE, DBP, BBP, DEHP, DIBP, and 0.01% for cadmium, or qualify for an exemption to these limits as defined in the Annexes of Directive 2011/65/EU (RoHS2). Finished electrical and electronic equipment products will be CE marked as required by Directive 2011/65/EU. Components may not be CE marked. Additionally, the part numbers that TE has identified as EU ELV compliant have a maximum concentration of 0.1% by weight in homogenous materials for lead, hexavalent chromium, and mercury, and 0.01% for cadmium, or qualify for an exemption to these limits as defined in the Annexes of Directive 2000/53/EC (ELV). Regarding the REACH Regulation, the information TE provides on SVHC in articles for this part number is based on the latest European Chemicals Agency (ECHA) 'Guidance on requirements for substances in articles' posted at this URL: <https://echa.europa.eu/guidance-documents/guidance-on-reach>

Compatible Parts



TE Part # 2107475-2
UNIPRESS 6/120 +COF+CHARG



TE Part # 2107725-1
AUTOPRESS L62+ COF+CHARG



TE Part # 2107730-1
AutoPress 80 18V+COF+CHARG




TE Part # 2107733-4
AUTOPRESS C120 18V+COF+CHARG
110V



TE Part # 2107731-1
AutoPress U120 18V+COF+CHARG

Also in the Series | SIMEL XCT



[Compression Connectors\(73\)](#)

Documents

Product Drawings

[XCT 95-12](#)

English

CAD Files

[3D PDF](#)

3D

Customer View Model

[ENG_CVM_CVM_709819-5_G.2d_dxf.zip](#)

English

Customer View Model

[ENG_CVM_CVM_709819-5_G.3d_igs.zip](#)

English

Customer View Model

[ENG_CVM_CVM_709819-5_G.3d_stp.zip](#)

English



By downloading the CAD file I accept and agree to the [Terms and Conditions](#) of use.

Datasheets & Catalog Pages

XCT-COPPER-TUBULAR-TERMINALS-FITTINGS

English